

**ITEM 28.            PARKING - PERMIT PARKING - PLEASANT AVENUE  
                          ERSKINEVILLE**

**TRIM RECORD NO:    2014/416681**

**RECOMMENDATION**

It is recommended that the Committee endorse the allocation of parking in Pleasant Avenue, Erskineville as follows:-

- A)    On the western side between points 25.6 metres and 117 metres (24 car spaces) south of Victoria Street as "2P 8am-10pm Permit Holders Excepted Area 36".
- B)    On the eastern side between points 25.6 metres and 117 metres (24 car spaces) south of Victoria Street as "2P 8am-10pm Permit Holders Excepted Area 36".

**DECISION**

**BACKGROUND**

In September 2014, the City received a petition signed by residents of 30 properties requesting consideration for permit parking in Pleasant Avenue, Erskineville.

Pleasant Avenue is a cul-de-sac local street with low residential traffic volume and there is a high demand for parking in the street. 90° angled parking has been operating successfully on both sides of the streets for many years without any reported incidents.

**COMMENTS**

Four parking spaces on the eastern side of Pleasant Avenue, south of Victoria Street, is signposted as "2P 8am-10pm Permit Holders Excepted Area 36". The remaining kerbspace in Pleasant Avenue is unrestricted for parking.

Timed permit parking was introduced in Pleasant Avenue and Albert, Bray, Concord and Devine Streets in early 2013 as part of the Erskineville Parking Study. The study recommended consideration of timed permit parking (2P 8am-10pm) with an exemption for eligible residents with a parking permit for the study area.

On-site inspection shows there is a need to increase the number of timed permit parking spaces to improve resident access to on-street parking.

The proposed changes would limit any vehicle which does not have an Area 36 permit to two-hours (2P) of parking from 8am to 10pm, seven days a week, where signs are installed.

A two-hour parking limit is preferred for streets in inner residential areas as it better balances the long-stay parking needs of permit holders with the needs of all households to use parking for visitors, family, carers and tradespeople.

**CONSULTATION**

The City consulted local residents and businesses in the area. There were 58 letters sent out with seven responses supporting the proposal and three responses opposing the proposal.

The submissions opposing the proposal were concerned about the loss of unrestricted parking. The submissions supporting the proposal believed the parking change would improve resident access to on-street parking.

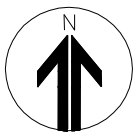
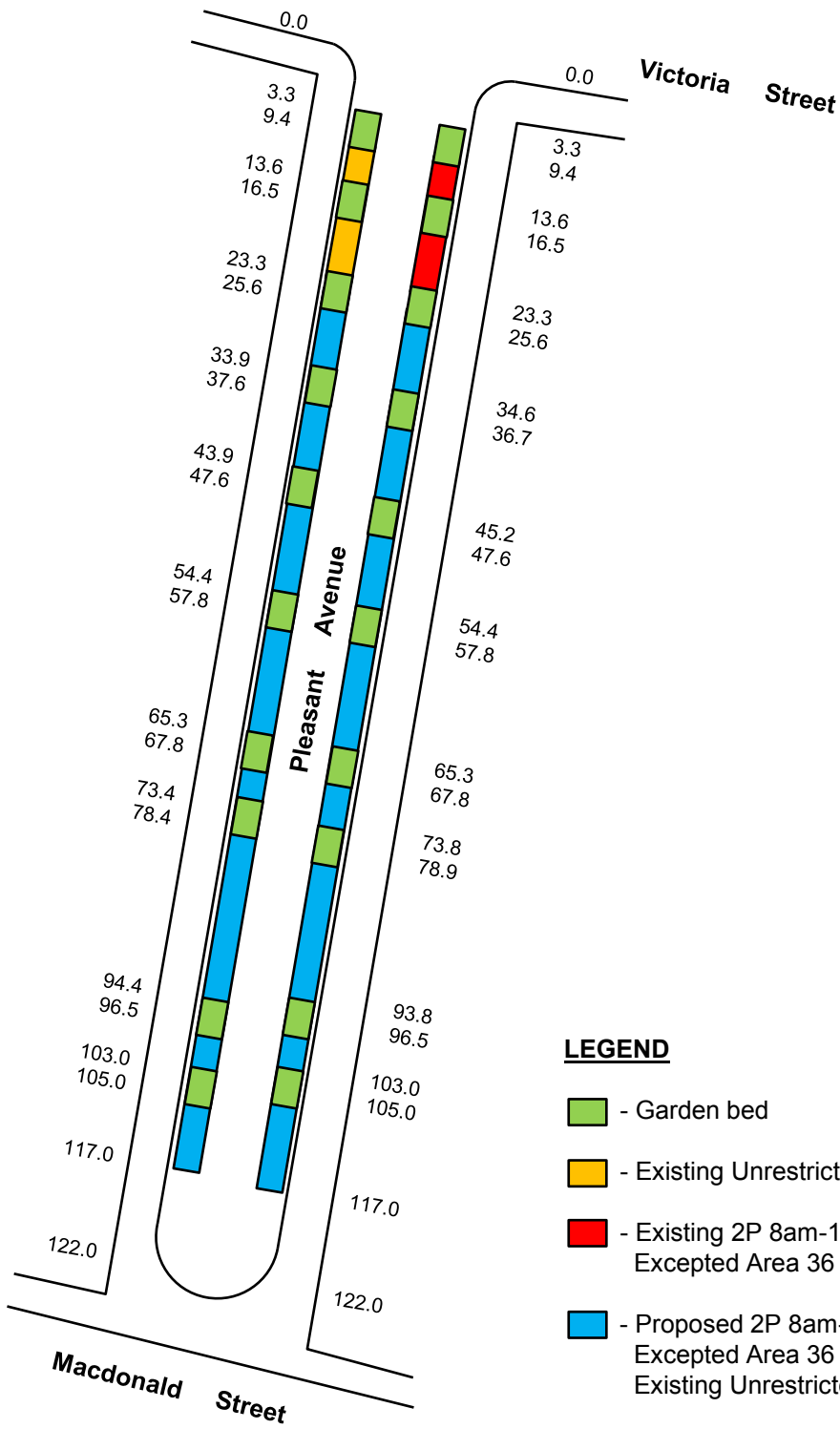
**FINANCIAL**

Funds are available in the current budget.

**ATTACHMENTS**

Parking - Permit Parking - Pleasant Avenue Erskineville

Michael Rimac, Engineering Traffic Officer



**PROPOSAL**

**PLEASANT AVENUE, ERSKINEVILLE  
PROPOSED PERMIT PARKING**



